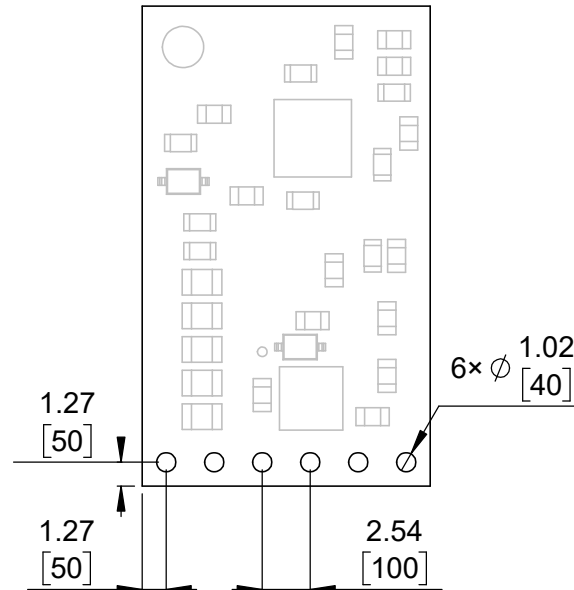
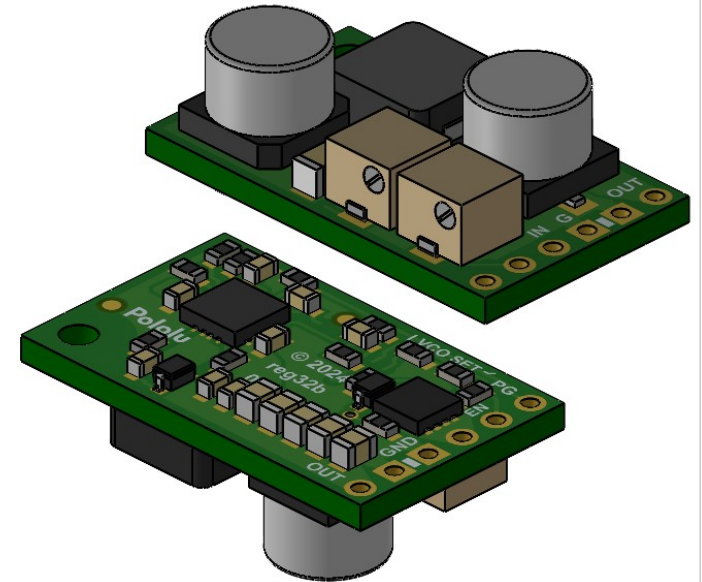


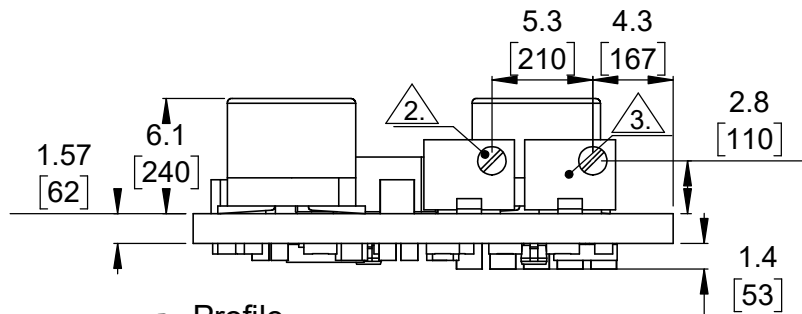
① Board dimensions (top view)
Scale 5:2



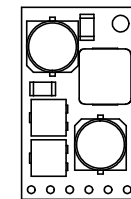
② Connector callouts (bottom view)
Scale 5:2



③ Isometric view
Scale 5:2



④ Profile
Scale 5:2



⑤ Actual size
Scale 1:1



Intended for #2 and M2 screws.



Trimmer adjustment slot is 1.5 [60] × 0.6 [22].



Some products covered by this diagram do not have this trimmer potentiometer populated.

4. To get the specified scale, select 100% in print settings.

5. Drill location tolerance: ±0.1 [±5].

6. Board edge tolerance: ±0.3 [±10].

<https://www.pololu.com/category/309>

Name:

D30V30Max Fine-Adjust Step-down
Voltage Regulators

Item number:

4872-4877

Drawing date:
8 March 2024

Dev code:
reg32b

Units: mm
[mil]

Material:
mixed


© 2024 Pololu Corporation